

**Lunenburg Yacht Club**  
**Welcome Back Regatta**  
August 20-23, 2020

Lunenburg Yacht Club (LYC)  
Hermans Island, Lunenburg Co, NS  
902-634-3745 [www.lyc.ca](http://www.lyc.ca)

**Sailing Instructions**

*The notation '[DP]' in a rule in the SI means that the penalty for a breach of that rule may, at the discretion of the protest committee, be less than disqualification.*

*The notation '[NP]' in a rule in the SI means that a breach of this rule will not be grounds for a protest by a boat. This changes RRS 60.1(a)*

**1 RULES**

The regatta will be governed by the rules as defined in *The Racing Rules of Sailing*.

**2 NOTICES TO COMPETITORS**

Notices to competitors will be posted on the official notice board on Yacht Scoring.  
<https://yachtscoring.com/emenu.cfm?eid=13097>

**3 CHANGES TO SAILING INSTRUCTIONS**

Any change to the sailing instructions will be posted before 0900 on the day it will take effect, except that any change to the schedule of races will be posted by 2000 on the day before it will take effect

**4 SIGNALS MADE ASHORE**

- 4.1** Signals made ashore will be displayed on the LYC flagpole at the northeast corner of the main clubhouse
- 4.2** When flag AP is displayed ashore, '1 minute' is replaced with 'not less than 60 minutes' in the race signal AP.

**5 SCHEDULE OF RACES**

- 5.1** Dates of racing:

Friday Aug 20 <sup>th</sup>	0900	Skippers Meeting – Tent on LYC front lawn One representative per boat ONLY please
Friday Aug 20 <sup>th</sup>	1100	First warning signal
Saturday Aug 21 <sup>st</sup>	1100	First warning signal
Sunday Aug 22 <sup>nd</sup>	1100	First warning signal
- 5.2** A maximum of four races per day may be sailed
- 5.3** On the last scheduled day of racing no warning signal will be made after 1530

## 6 CLASS FLAGS

Class flags will be:	<i>Class</i>	<i>Flag</i>
	IOD	IOD insignia
	Sonar	Sonar insignia
	PHRF A	Farr 30 insignia
	J/105	J/105 insignia
	PHRF B	White flag with 'PHRF' on it

## 7 RACING AREAS

Attachment 1 shows the planned location of racing area on the waters of Mahone Bay (Chart 4381)

## 7 CHECK-IN AND CHECK-OUT [DP] [NP]

- 7.1 Boats shall check in with the RC signal boat by sailing past the stern of the RC signal boat on starboard tack with mainsail up and hailing their sail number and number of crew on board prior to their first preparatory signal of the day. Check in by VHF will not be accepted.
- 7.2 Boats that retire during a race or leave the racing area between races shall check out with the RC either by hail or on VHF 72

## 8 THE COURSES

- 8.1 The diagrams in Attachment 2 show the courses, including the order in which marks are to be passed, and the side on which each mark is to be left.
- 8.2 The course to be sailed, approximate compass bearing and approximate distance from the signal boat to the windward mark will be displayed on the RC signal boat and broadcast on VHF 72 before the warning signal. Failure of the RC to broadcast or failure of the competitor to receive this notification on VHF 72 will not constitute grounds for requesting redress. This changes rule 62.1(a)
- 8.3 The last race of the day on Friday 21<sup>st</sup> August and Saturday 22<sup>nd</sup> August may utilize marks from the LYC Course Card (Attachment 3) and finish at the LYC club finish line. Courses will be announced on VHF 72 and displayed on a white board on the starboard side of the signal boat
- 8.4 Competitors shall follow the requirements of Attachment A.

## 9 MARKS

- 9.1 Mark 1 will be a yellow inflatable buoy  
Mark 1a will be a spherical buoy  
Mark 2S and 2P will be yellow inflatable buoys
- 9.2 New marks, as provided in SI 11, will be red tetrahedrons
- 9.3 The Race Committee may replace the leeward gate with a single yellow inflatable buoy at their discretion. If the leeward gate is replaced by a single mark, it shall be left to port.
- 9.4 LYC Club Marks are rigid yellow marks and are as indicated and numbered in the 2019 LYC Course Card (Attachment 4)

**9.5** Unless designated as rounding marks, the two red government marks off Little Herman Island (ME 66 and ME 64), Seal Ledge (MJ51) and Coveys Ledge (M61) shall be left on their required navigational side while racing.

## **10 THE START**

**10.1** The starting line will be between a staff displaying an orange flag on the RC Signal boat at the starboard end and yellow narrow cylindrical mark at the port end.

**10.2** The RC will attempt to hail OCS boats by sail number on channel 72. Failure to hail; the hail of some, but not all boats; or the timing of the hail shall not be grounds for requesting redress. This changes RRS 62.1(a)

**10.3** A boat that does not start within 5 minutes after her starting signal will be scored Did Not Start (DNS) without a hearing. This changes RRS A4 and A5

## **11 CHANGE OF THE NEXT LEG OF THE COURSE**

To change the next leg of the course, the race committee will lay a new mark (or move the finishing line) and remove the original mark as soon as practicable. When in a subsequent change a new mark is replaced, it will be replaced by an original mark.

## **12 THE FINISH**

**12.1** The finishing line will be between a yellow narrow cylindrical mark off the starboard side of the signal boat and a staff displaying a blue flag on the RC Signal boat at the other end

**12.2** The LYC club finish line (per SI 8.3) is an extension of the line from the yellow flagstaff on shore and the yellow inner finish buoy. The yellow outer finish buoy marks the outer limit of the finish line only and may or may not lie on the extension.

## **13 PENALTY SYSTEM**

### **13.1 PENALTIES WHILE RACING**

If a boat takes a penalty for breaking a rule of Part 2 while racing her penalty will be a One-Turn Penalty; but if she breaks a rule of Part 2 within the zone around a mark other than a starting mark, the penalty will be a Two-Turns Penalty. This changes RRS 44.1

### **13.2 PENALTIES TAKEN AFTER A RACE**

After a race, a boat that may have broken a rule of Part 2 or RRS 31 while *racing* may take a Post-Race Penalty for that incident. The penalty shall be a Scoring Penalty, calculated as stated in RRS 44.3(c). However RRS 44.1(a) and (b) apply. A boat takes a Post-Race Penalty by informing the jury in writing and identifying the race number and when and where the incident occurred. The Post-Race Penalty shall be:

(a) 20%, if taken before the protest time limit expires, or

(b) 30% if taken after the protest time limit but before the beginning of a hearing involving the incident

**13.3** The jury may apply discretionary penalties for infractions of the rules other than RRS 2, Rules of Part 2, or RRS 31

## **14 TIME LIMITS**

- 14.1** If no boat has passed Mark 1 within 45 minutes the race will be abandoned
- 14.2** The time limit for the first boat to finish the race is 120 minutes
- 14.3** Boats failing to finish within 30 minutes after the first boat sails the course and finishes will be scored Did Not Finish (DNF) without a hearing. This changes RRS 35, A4 and A5

## **15 PROTESTS AND REQUESTS FOR REDRESS**

- 15.1** Protest forms are available at the protest desk located in the Douglas Mosher Sail Training Centre and online at Yacht Scoring. Protests and requests for redress or reopening shall be delivered to the protest desk within the time limit
- 15.2** The protest time limit is 60 minutes after the RC signal boat docks
- 15.3** Notices will be posted online at Yacht Scoring within 10 minutes of being filed to inform competitors of hearings in which they are parties or named as witnesses. Hearings will be held in the protest room, located on the second floor of the Douglas Mosher Sail Training Centre or by remote means utilizing Zoom or a combination of the two, as decided by the protest committee chairman.
- 15.4** Notices of protests by the Race Committee or Protest Committee will be posted to inform boats under RRS 61.1(b).
- 15.5** On the last scheduled day of racing a request for redress based on a jury decision shall be delivered no later than 30 minutes after the decision was posted. This changes RRS 62.2.

## **16 SCORING**

- 16.1** Two races are required to be completed to constitute a series.
- 16.2** (a) When fewer than 5 races have been completed, a boat's series score will be the total of her race scores  
(b) When from 5 to 7 races have been completed, a boat's series score will be the total of her race scores excluding her worst score  
(c) When 8 or more races have been completed, a boat's series score will be the total of her race scores excluding her two worst scores.

## **17 COVID-19 [DP][NP]**

The 2020 Lunenburg Yacht Club *Welcome Back Regatta* will follow all applicable Province of Nova Scotia COVID-19 Guidelines. If a boat or participant breaks these COVID-19 Guidelines they may be protested. Penalties will range from a warning up to and including disqualification from the Regatta.

## **18 COACH AND SUPPORT BOATS [DP] [NP]**

All support or coach boats shall stay more than 50 metres to leeward of the starting line, more than 50 metres away from marks of the course and more than 100 metres away from any racing boats from the time of the preparatory signal for the first race of the day until all boats have finished racing for the day or the Race Committee signals a postponement or abandonment of racing for the day

**19 HAUL-OUT RESTRICTIONS [DP]**

Boats shall not be hauled out during the regatta except with and according to the terms of prior written permission of the race committee

**20 RADIO COMMUNICATION [DP]**

**20.1** Except in an emergency, a boat that is racing shall not make voice or data transmissions and shall not receive voice or data communication that is not available to all boats. [NP] [DP]

**20.2** The race committee will use VHF radio channel 72 to communicate to the fleet, which may include the location of the starting area, countdown to the start, OCS sail numbers, general recalls and postponements or abandonments. Failure of the race committee to make these broadcasts or failure to include a sail number or the order of sail numbers hailed or failure of a competitor to hear these broadcasts shall not be grounds for redress. This changes RRS 62.1. Competitors are strongly advised to have a working VHF to receive these communications.

**20.3** Dock staff at LYC monitor channel 68 for questions concerning moorings, fuel, etc.

**21 PRIZES**

Prizes will be awarded to the top three boats in each class in the series. Daily prizes will be awarded following racing to the top two boats in each class for the day

**22 DISCLAIMER OF LIABILITY AND COVID DECLARATION**

Competitors participate in the regatta entirely at their own risk. See RRS 4, Decision to Race. Neither the Organizing Authority nor the Host will accept any liability for material damage or personal injury or death sustained in conjunction with or prior to, during, or after the regatta.

**23 INSURANCE [DP]**

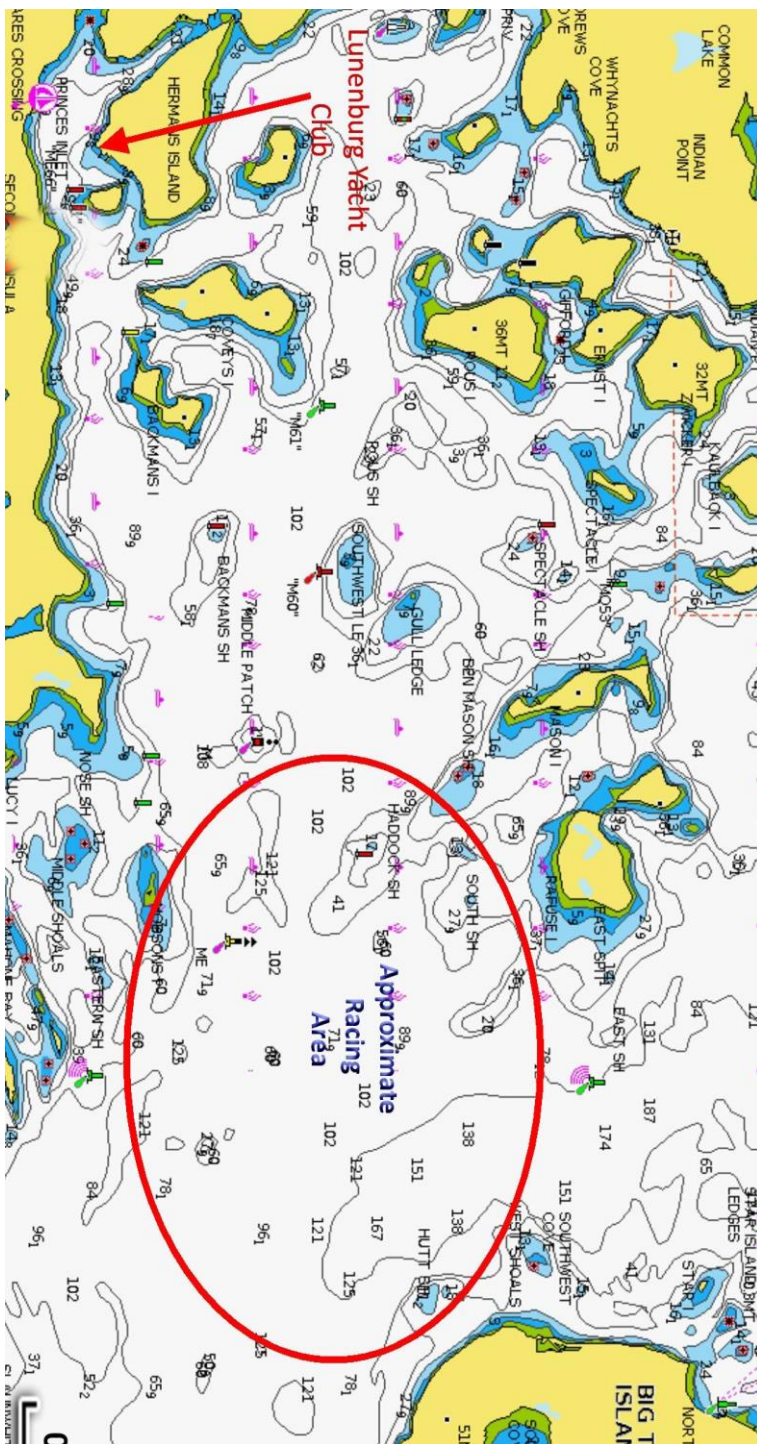
Each participating boat shall be insured with valid third-party liability insurance with a minimum cover of C\$1,000,000 per incident or the equivalent. It is the owner or owner's representative's sole and inescapable responsibility to ensure that the insurance is in place and is adequate prior to participating in this event.

**24 MEDIA RIGHTS**

Competitors give absolute right and permission for video footage or photographs of themselves, their crew or their boat to be published by LYC on social media, in the press, editorial usage or advertising purposes.

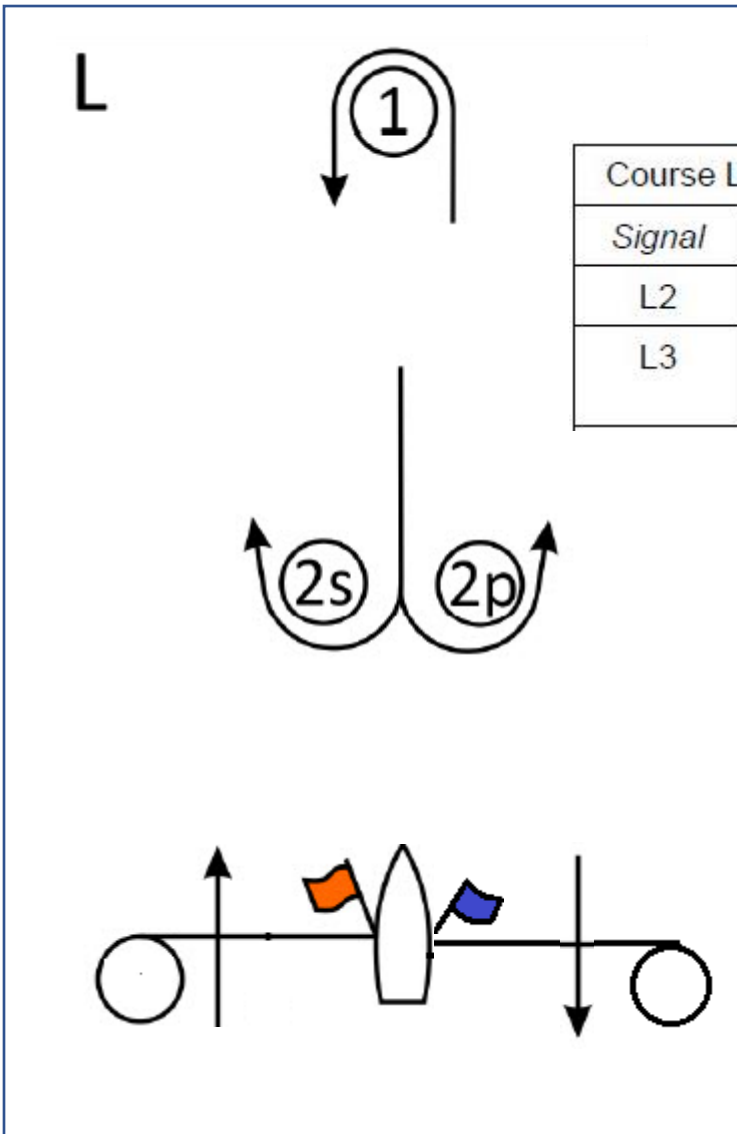
# ATTACHMENT 1

## Planned Racing Area on waters of Mahone Bay (chart 4381)



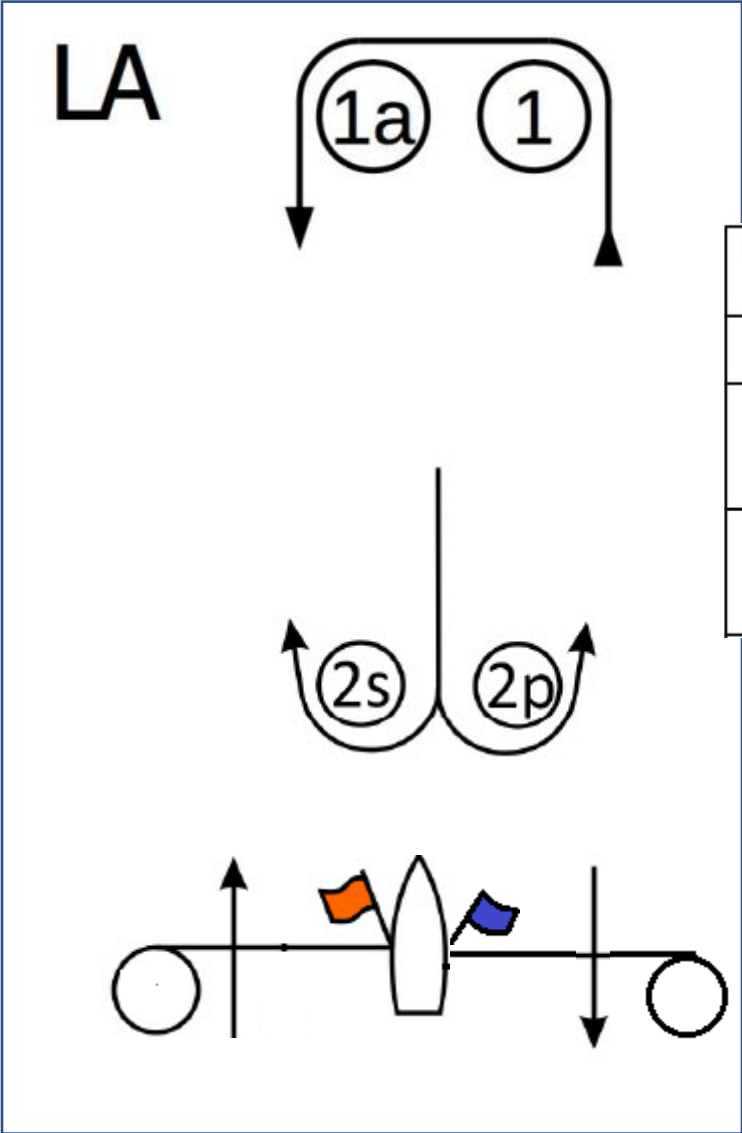
## ATTACHMENT 2 COURSE DIAGRAMS

Course	Signal flag
L2	Numeral Pennant 1
L3	Numeral Pennant 2



Course L – Windward/Leeward, Leeward Finish	
<i>Signal</i>	<i>Mark Rounding Order</i>
L2	Start – 1 – 2s/2p – 1 – Finish
L3	Start – 1 – 2s/2p – 1 – 2s/2p – 1 – Finish

Course	Signal flag
LA2	Numeral Pennant 3
LA3	Numeral Pennant 4



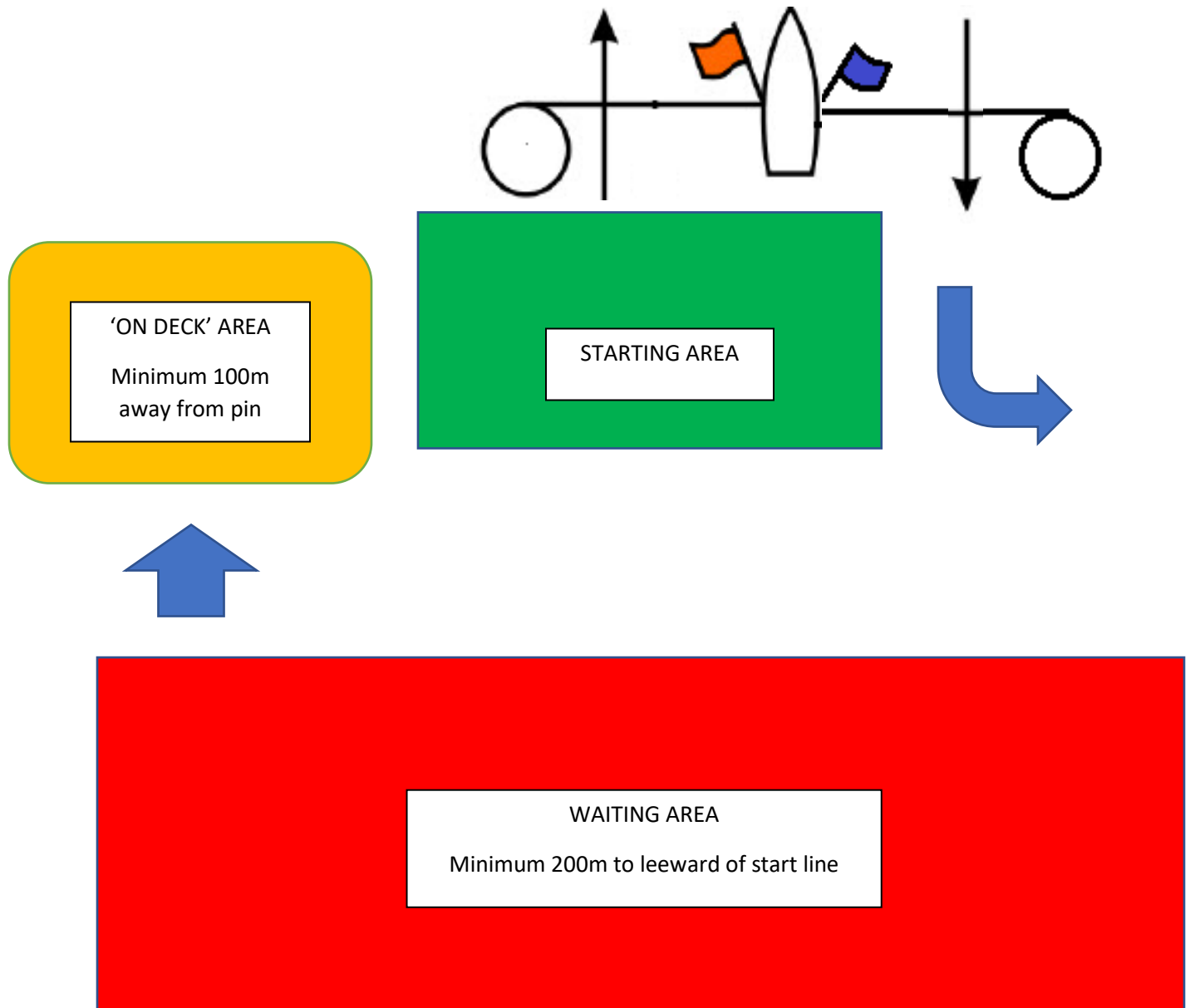
Course LA – Windward/Leeward with Offset Mark, Leeward Finish	
<i>Signal</i>	<i>Mark Rounding Order</i>
LA2	Start – 1 – 1a – 2s/2p – 1 – 1a – Finish
LA3	Start – 1 – 1a – 2s/2p – 1 – 1a – 2s/2p – 1 – 1a – Finish



# Attachment 3

## Boat Movement

Immediately after finishing, boats are required to turn to port to avoid the starting area. Boats shall not enter the starting area until their warning signal. Boats not starting or 'on deck' shall remain at least 200m to leeward of the start line. RC will announce, via VHF, the fleet whose warning signal will be next as well as the fleet who is 'on deck'. At the warning signal, the fleet which is starting should move from the 'on deck' area to the starting area, and the fleet who is 'on deck' should move from the waiting area to the 'on deck' area.



# Attachment 4

